

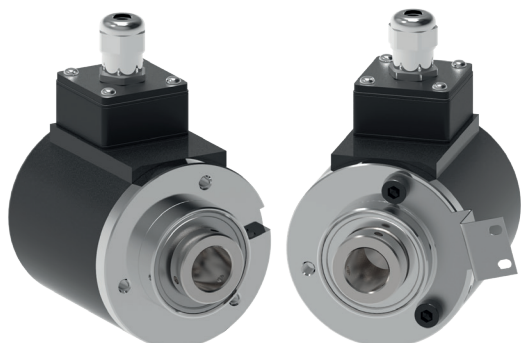
TKE615

hollow shaft

Ø 63,5



Italsensor Quality System certified according to the UNI EN ISO 9001



Features:

TKE615- blind shaft absolute encoder (with grub screw or with collar) for generic industrial applications.

- **high reliability and long service life;**
- **resolution: 12 bit, 13 bit on request;**
- **protection degree up to IP64;**
- **STD codes: GRAY/ BINARY/ BCD;**
- **cable and connector outputs;**



MECHANICAL SPECIFICATIONS/ CARATTERISTICHE MECCANICHE

Dimensions/ Dimensioni

Shaft loading/ Carico sull'albero

Shaft Rotation Speed/ Numero giri

Bearing life/ Vita dei cuscinetti

Weight/ Peso

see drawings/ vedi disegni
axial/ assiale 200 N; radial/ radiale 200 N
10.000 RPM (short cycle time/ brevi periodi) 6.000 RPM (continuous/ continui)
5 x 10⁹ rev. min./ giri (minimo)
~ 0,45 kg

ELECTRICAL SPECIFICATIONS/ CARATTERISTICHE ELETTRICHE

Power supply/ Alimentazione

STD codes

Output frequency/ Frequenza in uscita

Protection/ Protezione

5 V; 11÷30 V;
GRAY/ BINARY/ BCD
from 0 to 20 kHz (L.S.B. without error/ senza errore)
against inversion of polarity (except 5V)/
contro inversione di polarità (escluso 5V)

MATERIALS/ MATERIALI UTILIZZATI

Flange/ Flangia

Housing/ Corpo

Shaft/ Albero

aluminum non corroding/ in alluminio anticorrosione
Aluminum painted with inhibiting treatment 180 °C/
Alluminio verniciato con trattamento termico a 180 °C
stainless steel/ acciaio inossidabile

ENVIRONMENTAL SPECIFICATIONS/ CARATTERISTICHE AMBIENTALI

Operating temperature range/ Temperatura di lavoro

Storage temperature range/ Temperatura di stoccaggio

Protection degree/ Grado di protezione (EN 60529)

Relative humidity/ Umidità relativa

Vibrations/ Vibrazioni (EN 60068-2-6)

Shock resistance/ Resistenza a shock (EN 60068-2-27)

-10°C ÷ +70 °C
-30°C ÷ +80 °C
up to IP64
98% RH without condensing/ senza condensazione
10 g (from 10 up to 2.000 Hz) / (da 10 a 2.000 Hz)
20 g (for 11 ms) /(per 11 ms)

ORDER CODE

TKE615. X . XXXX . XXXXX . XXXXX . XX . XX . XXnn . XXXX . X . Xnnn

a b c d e f g h i j k

a MODEL/ MODELLO

TKE615

b ASSEMBLY/ MONTAGGIO

= Default /predefinito
M with spring anti-rotation spring / con molla antirotazione

c STEPS/ PASSI PER GIRO

16	16 steps/turn G;B	16 passi/giro G;B
32	32 steps/turn G;B	32 passi/giro G;B
64	64 steps/turn G;B	64 passi/giro G;B
128	128 steps/turn G;B	128 passi/giro G;B
256	256 steps/turn G;B	256 passi/giro G;B
512	512 steps/turn G;B	512 passi/giro G;B
720	720 steps/turn G;B	720 passi/giro G;B
900	900 steps/turn G;B	900 passi/giro G;B
1024	1024 steps/turn G;B	1024 passi/giro G;B
90	90 steps/turn G/19;B/19	90 passi/giro G/19;B/19
180	180 steps/turn G/38;B/38	180 passi/giro G/38;B/38
360	360 steps/turn G/76;B/76	360 passi/giro G/76;B/76
720	720 steps/turn G/152;B/152	720 passi/giro G/152;B/152
90	90 steps/turn G/0;B/0	90 passi/giro G/0;B/0
180	180 steps/turn G/0;B/0	180 passi/giro G/0;B/0
250	250 steps/turn G/0;B/0	250 passi/giro G/0;B/0
360	360 steps/turn G/0;B/0	360 passi/giro G/0;B/0
500	500 steps/turn G/0;B/0	500 passi/giro G/0;B/0
720	720 steps/turn G/0;B/0	720 passi/giro G/0;B/0
1000	1000 steps/turn G/0;B/0	1000 passi/giro G/0;B/0
250	250 steps/turn E;D	250 passi/giro E;D
360	360 steps/turn E;D	360 passi/giro E;D
500	500 steps/turn E;D	500 passi/giro E;D
720	720 steps/turn E;D	720 passi/giro E;D
1000	1000 steps/turn E;D	1000 passi/giro E;D
90	90 steps/turn D	90 passi/giro D
180	180 steps/turn D	180 passi/giro D

d CODE/ CODICE

B	Natural Binary code/ codice Binario naturale
B/0	Binary code centrally cutted/ codice Binario troncato centr.
B/19	Binary code - exc (90)/ codice Binario - eccesso (90)
B/38	Binary code - exc (180)/ codice Binario - eccesso (180)
B/62	Binary code - exc (900)/ codice Binario - eccesso (900)
B/76	Binary code - exc (360)/ codice Binario- eccesso (360)
B/152	Binary code - exc (720)/ codice Binario- eccesso (720)
D	BCD code (100÷720)/ codice BCD (100÷720)
E	Excess 3 Gray code (100÷720)/ codice Gray exc. 3 (100÷720)
G	Natural Gray code/ codice Gray naturale
G/0	Gray code centrally cutted/ codice Gray troncato centr.
G/19	Gray code - exc (90)/ codice Gray - eccesso (90)
G/38	Gray code - exc (180)/ codice Gray - eccesso (180)
G/76	Gray code - exc (360)/ codice Gray - eccesso (360)
G/152	Gray code - exc (720)/ codice Gray - eccesso (720)

e POWER SUPPLY/ ALIMENTAZIONE

5 +5 V ±5 %
11/30 +11÷30 V

f PROTECTION DEGREE/ GRADO DI PROTEZIONE

K1 IP 55 (EN60529) with D25 only/ solo con D25
K4 IP 64 (EN60529)

g SHAFT/ ALBERO

15 Ø 15 mm

h ELECTRICAL CONNECTIONS/ CONNESSIONI ELETTRICHE

Pnn on axial cable gland with cable 1 ÷ 6 m long /pressacavo assiale con cavo da 1 a 6 m;
PLnn radial cable gland with cable 1 ÷ 6 m long /pressacavo radiale con cavo da 1 a 6 m;
S07 on 7 pins axial MIL connector /conn. circolare militare assiale a 7 poli
S10 on 10 pins axial MIL connector /conn. circolare militare assiale a 10 poli
S26 on 26 pins axial MIL connector /conn. circolare militare assiale a 26 poli
SL07 on 7 pins radial MIL connector /conn. circolare militare radiale a 7 poli
SL10 on 10 pins radial MIL connector /conn. circolare militare radiale a 10 poli
SL26 on 26 pins radial MIL connector /conn. circolare militare radiale a 26 poli
nn cable length/ lunghezza cavo (es. PL10 = 1 m. ...PL60 = 6 m)

i OUTPUT CIRCUITS/ CIRCUITI DI USCITA

20 PNP 100 mA open collector (positive logic / logica positiva);
21 PNP 100 mA pull-down (positive logic/ logica positiva) (only/ solo 11/30V);
22 NPN 100 mA open collector (negative logic/ logica negativa);
23 NPN 100 mA pull-up (negative logic/ logica negativa) (only/ solo 11/30V);
30 Push-Pull protected (max 20 mA for each channel / per canale).
S13D SSI 13 bit right alignment/ allineamento a destra (only / solo 11/30V)

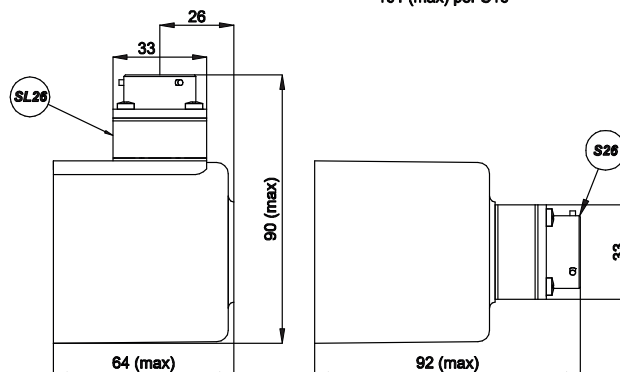
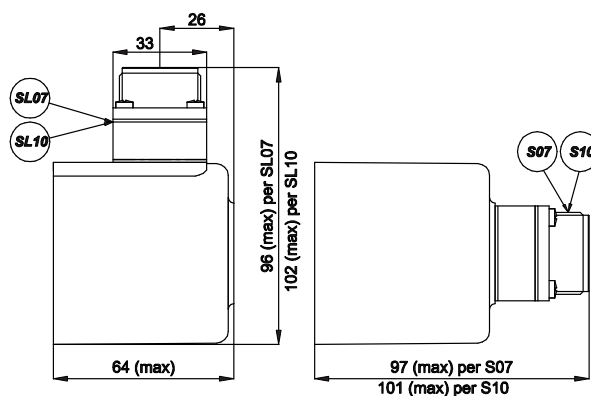
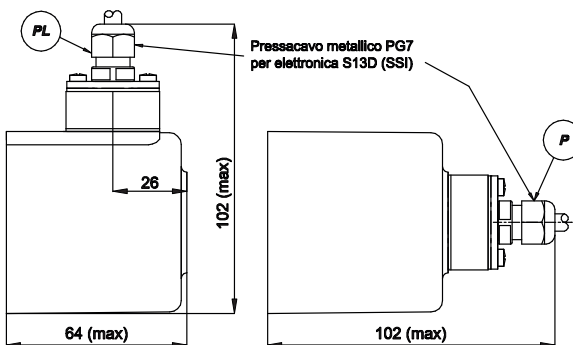
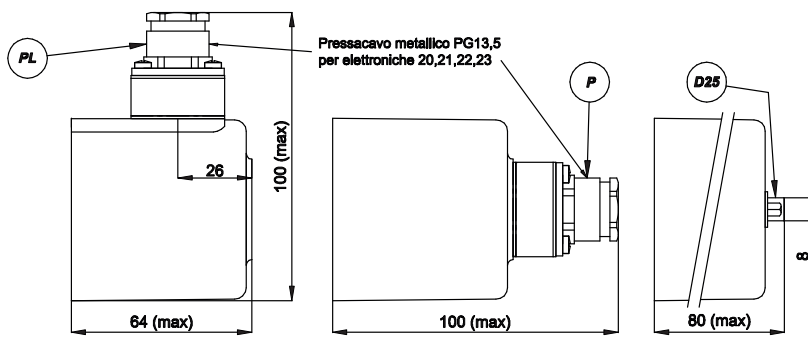
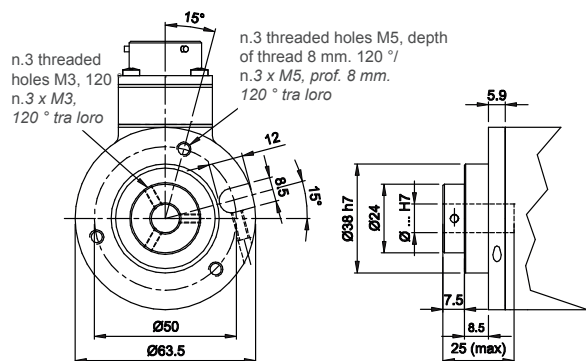
j OPTIONS/ OPZIONI

U Up/Down NPN
Z Zero signal/ Segnale di zero (except output S13D/ esclusa elettronica S13D)
V Displayed Index signal/ Segnale di index visualizzato (except output S13D/ esclusa elettronica S13D)

Mechanical assembly/
montaggio meccanico

Electrical connections/
connessioni elettriche

= Default



M Flange with anti-rotation spring

